

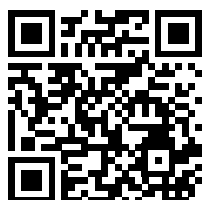
Tubular motor

Rojaflex RB25LEU

With electronic limit switches and integrated radio receiver

ORIGINAL ASSEMBLY AND OPERATING INSTRUCTIONS

Eine aktuelle Vollversion der Anleitung finden Sie hier/
You can find a current full version of the manual here/
Vous trouverez ici une version complète et actuelle du mode d'emploi/
Puede encontrar una versión completa actual del manual aquí/
Potete trovare una versione completa attuale del manuale qui/
Een actuele volledige versie van de handleiding vindt u hier/
Aktualną, pełną wersję podręcznika można znaleźć tutaj/
A kézikönyv aktuális, teljes verzióját itt találja:



Original assembly and operating instructions **EN**

Instructions de montage et d'utilisation originales **FR**

Instrucciones de montaje y funcionamiento originales **ES**

Istruzioni originali per il montaggio e l'uso **IT**

Originele montage- en gebruiksaanwijzing **NL**

Oryginalna instrukcja montażu i obsługi **PL**

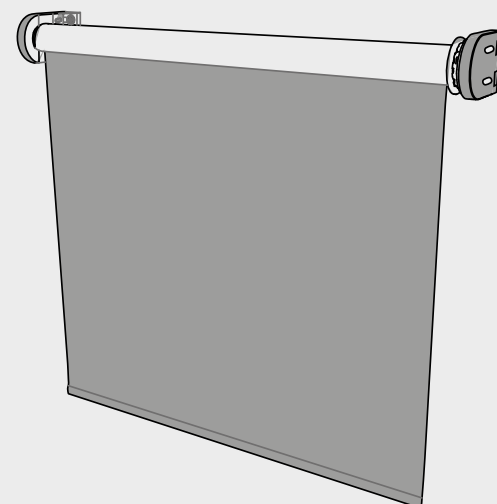
Eredeti összeszerelési és kezelési útmutató **HUN**



CONTENTS

Safety instructions	3-5
Technical data / scope of delivery /	6
Function overview drive head	
Compatible handheld and wall transmitters	7
Mounting	
Prepare assembly	8
Mounting the motor	9
Settings and programming	
Commissioning battery /	10
Programming the end positions / battery switch	
Functional description Programming key P1.....	11
Programming the first handheld or wall transmitter	12
Change the direction of rotation of the drive.....	13
Setting the end positions (end points).....	14-15
Setting the intermediate position.....	16
Set jog mode /	17
Program additional handheld and wall transmitters	
Delete handheld and wall transmitters.....	18
Troubleshooting / FAQ	19
Contact information.....	Back

RB25LEU
Tubular motor with electronic limit switches and integrated radio receiver for interior textile shades



Art.-Nr.
RB25LEU 1000012319

ATTENTION!


After unpacking, compare the device type with the corresponding information on the type plate. Incomplete devices or devices that do not comply with the specifications must not be put into operation and a complaint must be lodged with our customer service department (see contact information) before commissioning.


EU Declaration of Conformity according to Article 10(9):



Herewith declares Schoenberger Germany Enterprises GmbH & Co. KG, Hohenschäftlarn, that the radio system type rojaflex tubular motor "**RB25LEU**" complies with the directive 2014/53/EU.

The full text of the EU Declaration of Conformity is available at the following Internet address:
www.rojaflex.com/konformitaetserklaerungen.html



-  **Important safety instructions!**
For the safety of persons it is important to follow these instructions!
Please keep the manual and hand it over to the new owner in case of change of ownership!
This appliance can be used by children aged from 8 years and above and persons with reduced physical, sensory or mental capabilities or lack of experience and knowledge if they have been given supervision or instruction concerning use of the appliance in a safe way and understand the hazards involved.
Children are not allowed to play with the device.
Cleaning and maintenance by the user must not be carried out by children without supervision.

-  **WARNING!**
The motor must be switched off during cleaning, maintenance and replacement of parts.
Hand-held and wall-mounted transmitters must be stored in such a way that unintentional operation of the system is excluded in order to prevent injuries and damage.

-  Carry out all assembly and connection work in a de-energized state.
Der Einsatz defekter Geräte kann zur Gefahr für Personen und Sachschaden (elektrischer Schlag, Kurzschluss) führen.
Never use defective or damaged equipment.
-  Check that the drive and power adapter (charger) are intact.

The mains adapter (charger) of this drive may only be replaced by the same type, supplied by the manufacturer of the drive, in order to avoid hazards and damage to the drive.

Please contact our service department (see last page for contact details) if you notice any damage to the device.

-  **ATTENTION!**
It is essential to observe the installation and connection instructions! Improper installation and assembly can lead to serious injuries!

-  **Important operating instructions**

Charge the drive battery before first use to ensure full battery performance.

Only use the original charger of the motor (5V USB charging adapter) for this purpose.

Do not operate the motor in the event of an undervoltage alarm (see description on page 10).

Rated torque and rated operating time must be compatible with the characteristics of the driven equipment.

Proper operation of the equipment is only guaranteed if it is properly installed, assembled, supplied with sufficient power and maintained.

The plant must be secured against unauthorized operation. Take safety precautions against unintentional switch-on.

⚠ Only use original accessories from the manufacturer to avoid damage to the drive and the driven equipment.
The manufacturer's liability for defects and damage is excluded if these are based on non-observance of the operating instructions (incorrect installation, incorrect operation, etc.).

⚠ **ATTENTION!**
It is essential to observe the instructions for correct use and the operating conditions!
There is an increased risk of injury if used improperly!
Use the motors only for opening and closing interior sunshades.
Instruct all persons in the safe use of the engine.
Prohibit children from playing with stationary controls or with the remote control.
Store the handheld transmitter in such a way that unintentional operation, e.g. by children playing, is impossible.
Carry out all cleaning work on the sun shading system in a de-energized state.
Take special care with moving and open / extended equipment, as parts may fall if fastenings (e.g. springs, brackets, consoles, etc.) weaken or are broken.

⚠ **ATTENTION!**
The following installation instructions must be observed!
The range of radio controls is regulated by the legal requirements for radio systems and is influenced by structural conditions, among other things.

When planning, make sure you have adequate radio reception.
This is especially true if the radio transmitter is located in a different room than the radio receiver, and therefore the radio signal must penetrate walls or ceilings.
Do not install the radio control in the direct vicinity of large metallic surfaces.
Other transmitting equipment (e.g. radio headphones, baby monitors, radio weather stations) whose transmission frequency is identical to that of the radio control unit may interfere with reception.

Lay the antenna of the motor/receiver as straight as possible (e.g. do not wrap the antenna around the motor or cables etc.).

⚠ **IMPORTANT!**
Disposal instructions!
European Directive 2012/19/EU (WEEE)

Our electrical and electronic products are marked with a crossed-out wheeled garbage can, which indicates that these products and any batteries they may contain must be collected separately at the end of their useful life and must not be disposed of together with normal household waste.



The substances contained in these products may have negative effects on health and the environment, so users of electrical products and batteries also have a responsibility in recycling these waste materials and in this way contribute to the protection, preservation and improvement of the environment.

Obligation for separate disposal

Our duty as manufacturers is, among other things, to inform you of your obligation to separate disposal.

- When disposing of products with batteries, remove them from the product and dispose of them separately.
- When disposing of illuminants, they must be disposed of separately to the receptacle.

Return option and Recycling program EU

We are connected to public-law return systems throughout Europe and thus offer our customers access to a Europe-wide network of local recycling facilities (recycling centers, take-back points or similar).

Our products are professionally recycled via these local facilities. This reduces the amount of waste - to the benefit of the environment.

Our registration numbers:

	Reg. no.*
WEEE	DE 41060608
Battery	DE 88866710
Illuminant	
Transport and Shipping packaging	DE5768543732165

***For registration data of other European countries, see Contact Information page.**

A take-back by us as manufacturer according to §19 WEEE is not to be asserted.

Information on the degree of fulfillment of the collection and recycling requirements

It is also our duty as a manufacturer to inform you about the degree of fulfillment of the collection and recycling requirements. Since we are connected to a qualified take-back system, we can refer to the degree of fulfillment of the recycling companies.

You can find this information on our website.

Deletion of personal data

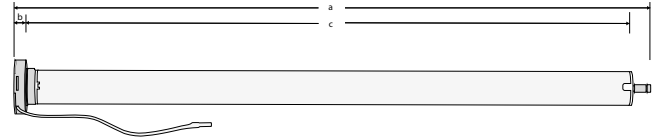
Some of our products contain personal data. This applies in particular to information and telecommunications technology devices such as computers and smartphones. In your own interest, please note that each end user is responsible for deleting the data on the old devices to be disposed of!

Technical data

Motor type	Motor voltage	Rated current	Charging current (max.)	Charging voltage	Engine power	Output torque	Output speed	Switch-on duration (max.)	Temperature range	Protection class	Transmitter memory	Min. shaft diameter	Emission-sound pressure-	Dimensions (mm)
RB25LEU	12 V/DC	1,2 A	2,0 A	5 V	10 W	1,1 Nm	28 Min ⁻¹	6 Min.	-10 °C / +50 °C	IP 20	20	30,9 mm	≤ 70 dB	a=503 / b=9 c=482

Jacket pipe diameter: RB25LEU = 25 mm

Radio frequency
433,05 - 434,79 MHz



Scope of delivery

Compare after unpacking:

- the package contents with the information on the scope of delivery in these instructions.
- the motor type with the corresponding information on the nameplate.

Please refer to the packaging for the type designation and to the table above for the technical data.

If necessary, incomplete devices or devices that do not comply with the specifications must not be put into operation and a complaint must be lodged with our customer service (see contact information) before the motor is installed!

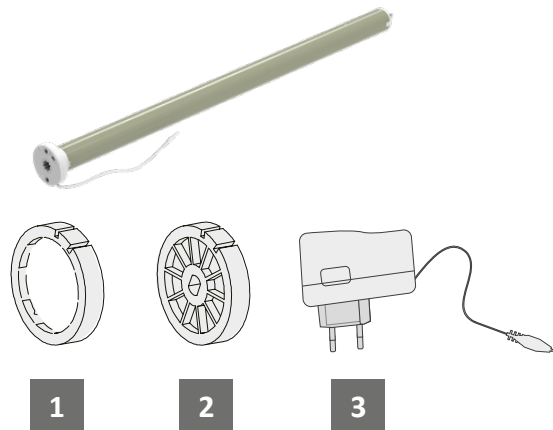
Drive

(Model / type see package specification)
incl. integrated battery and radio receiver
Assembly and operating instructions

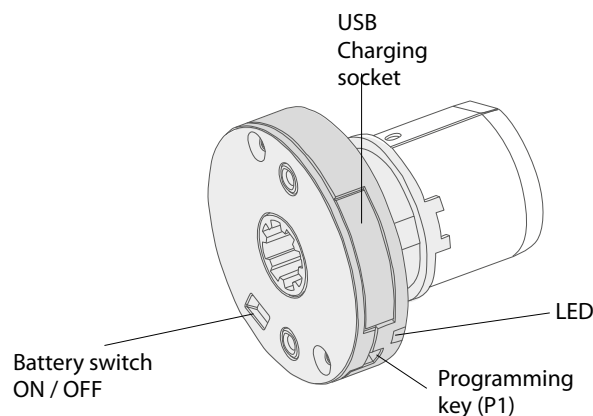
Required accessories

(not included in the scope of delivery)

1. Adapter
2. Driver
3. Mains charging adapter



Function overview drive head



Handheld transmitter



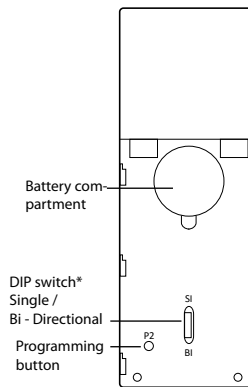
HSR-1
90100079

HSR-5
90100080

HSR-15
90100081

HSTR-5
90100082

HSTR-15
90100083



HSR handheld transmitter rear side with cover open

Wall transmitter

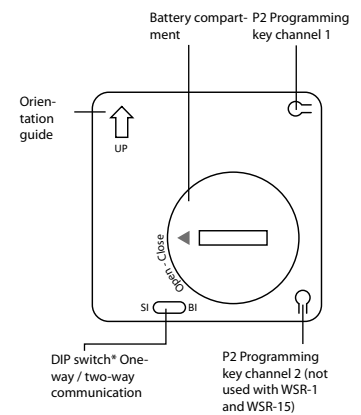


WSR-1
90100084

WSR-2
90100085

WSR-15
90100086

WSTR-5
90100087



WSR wall transmitter back side

Required DIP switch position = SI

*With the „DIP“ switch you can, depending on the radio receiver (see receiver instructions), choose between „SI“ and „SI“.
(Single = one-way communication) and „BI“ (Bidirectional = two-way communication) - radio.

Please follow the instructions of the respective transmitter!

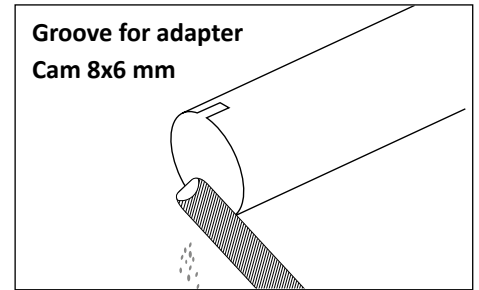
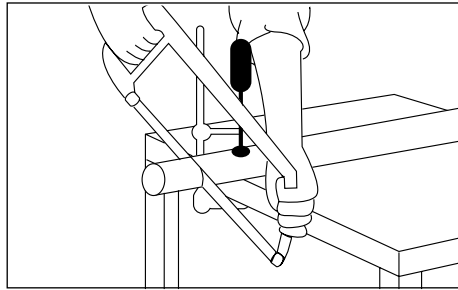
The shaft of the driven system (roller blind, screen, etc.) must fit tightly against the adapter and driver of the drive.

Only use adapters and drivers from our range of accessories that are permitted and approved for the drive.

Adjusting the shaft

A groove must be cut into the shaft to accommodate the adapter cam.

Make sure that the shaft has a straight and undamaged cutting edge.
Deburr the cut surfaces with a file.

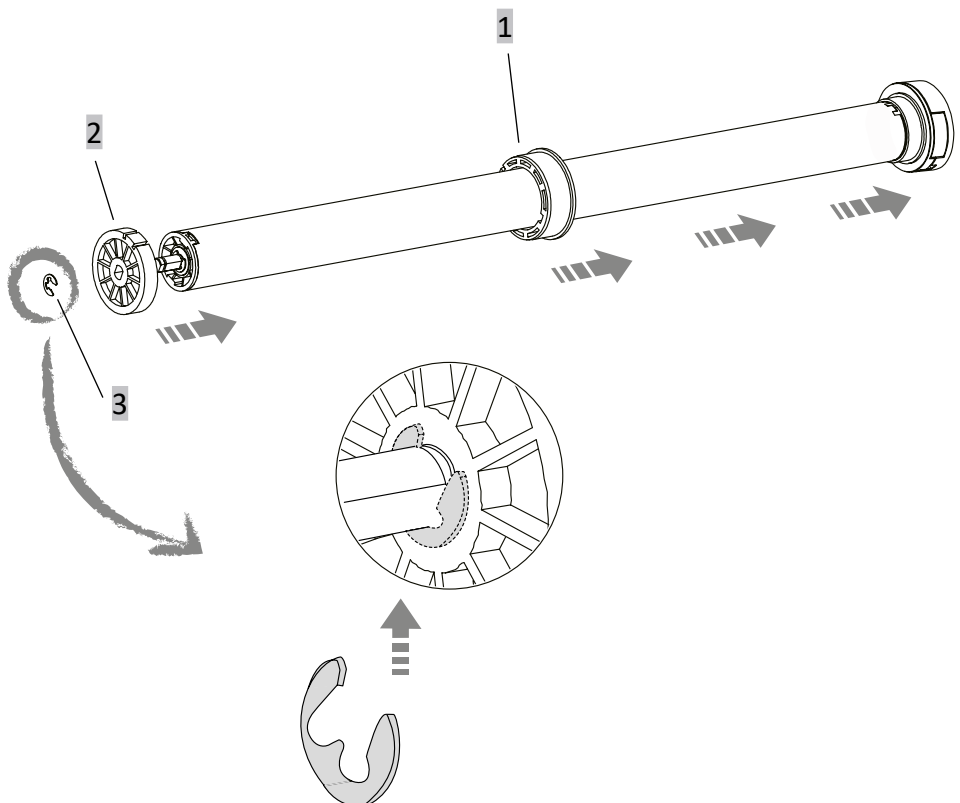


Assembly of the adapter and driver

Plug in the adapter (1) on the outer casing of the drive.

Make sure that the adapter is fitted with the wide bead to the motor head (see drawing) and is seated completely up to the stop in the groove of the base ring on the drive head.

Insert the driver (2) onto the output shaft of the drive and secure it with the lock washer (3).



Mounting the motor into the shaft

Carefully push the drive into the shaft.

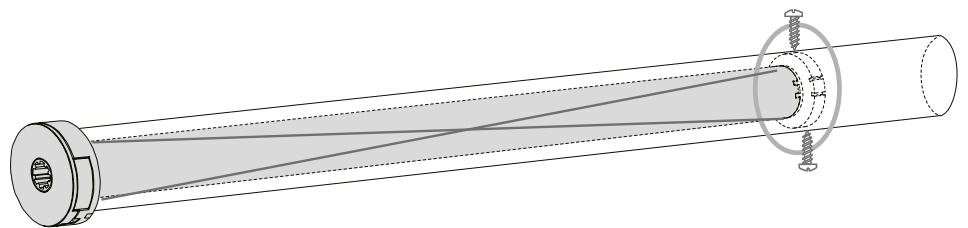
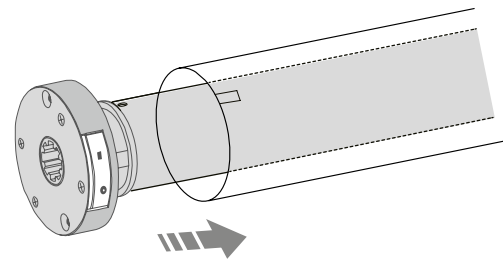
Do not hit the drive head under any circumstances!

Make sure that the adapter is inserted into the shaft as far as it will go.

A crooked adapter can „slip through“ if necessary. In this case, there is a risk that the limit switching of the drive will not function properly.

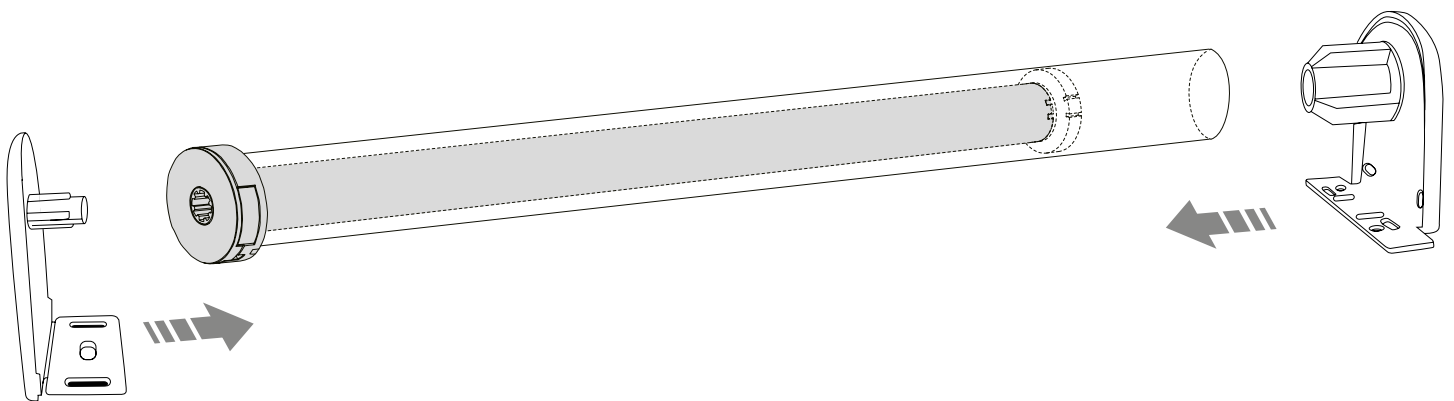
This can cause damage to the drive and the driven equipment.

Secure the driver with two short, opposing screws (self-tapping sheet metal screws) or blind rivets.



Make sure that no screws are screwed into the shaft in the area of the outer casing of the drive.

Do not drill in the area of the casing pipe!



Then mount the drive together with the shaft in the bearings of the equipment to be driven. Follow the instructions for the sun protection system (roller blind, screen, etc.).

Commissioning / Battery

1. Charge the drive battery before first use to ensure full battery performance.

Only use the original charger of the motor (5V USB charging adapter) for this purpose.

2. **Do not use the motor in case of undervoltage.**

Please note the following information / messages:

Voltage below 7V:

Motor alarm during operation.

Motor beeps 10 x /

LED on motor head flashes 10x.

Note that the battery should be charged.

Voltage below 6.8V:

Motor stops during operation.

Charge the battery!

Battery charge for operation min. 7.2V.

Voltage below 6V:

Engine does not start.

Charge the battery!

Battery charge for operation min. 7.2V

Settings / Programming

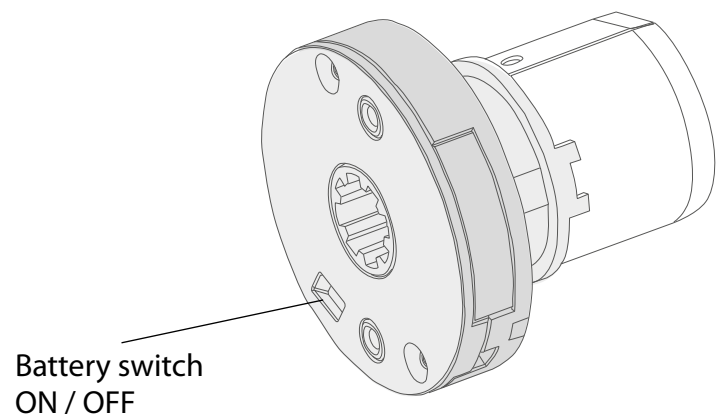
1. During settings or programming, each keystroke must be made within max. 5 seconds. Otherwise, the system automatically exits the programming mode.
2. The actuator moves UP/DOWN briefly after each keystroke during programming or the actuator beeps as feedback for a received command.
3. When programming, always wait for the actuator feedback before sending the next command.

Programming the end positions

1. The end positions UP and DOWN must not be in the same position.
There must be at least 2 shaft revolutions between the UP and DOWN end positions.
2. After programming the end positions, switch off the drive (battery switch on the motor head) and then switch it on again to complete the programming.
3. To delete any end positions which have already been programmed or which have been programmed incorrectly, reset the actuator to the delivery state (see page 11).
4. If no commands are sent to the drive, the drive exits the programming mode automatically after approx. 2 minutes.
5. The max. operating time of the drive is approx. 6 minutes. After that, the drive switches off automatically.

Battery switch ON/OFF

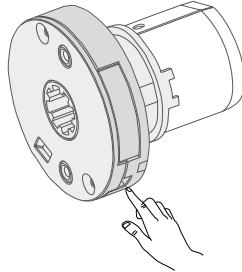
The drive must be switched on at the battery switch before any programming or setting work is carried out.



Functional description of the P1 programming key (programming button on the motor head)

1. Control the drive with the P1 key:

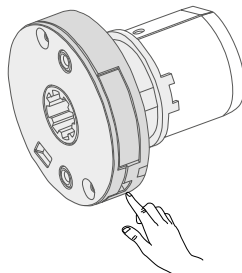
Press the P1 key briefly:
Actuator runs OPEN
Briefly press the P1 key again:
Drive stops
Briefly press the P1 key again:
Drive drives DOWN



ATTENTION!
Function is only active if end positions have already been taught.

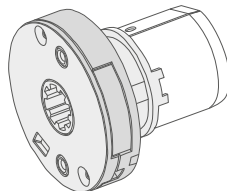
2. Programming mode:

Press the P1 key for approx. 2 seconds:
Actuator moves briefly UP / DOWN.



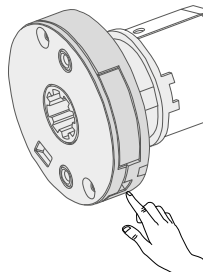
Release the P1 key:
Antrieb piept 1x.

Drive is in programming mode.



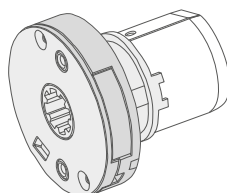
3. Change the direction of rotation:

Press the P1 key for approx. 10 seconds:
Drive moves 3 x UP / DOWN.



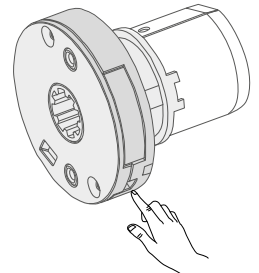
Release the P1 key:
Antrieb piept 3 x

Direction of rotation is changed.



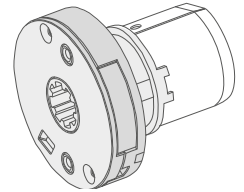
4. Switching off the receiver:

Press the P1 key for approx. 6 seconds:
Drive moves 2 x UP / DOWN.



Release the P1 key:
Antrieb piept 2 x

Receiver is switched off.

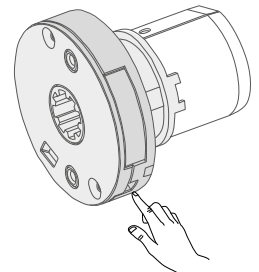


Drive can now NOT be operated with the handheld transmitter!

To reactivate the receiver, briefly press the P1 key on the motor head 2 times.

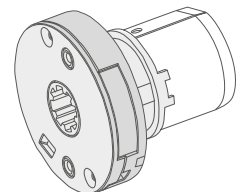
5. Reset (drive back to delivery state):

Press the P1 key for approx. 14 seconds:
Drive moves 4 x UP / DOWN.



Release the P1 key:
Antrieb piept 4 x

Drive is in delivery condition.



ALL settings (end positions, transmitter) are deleted!

Programming the first handheld or wall transmitter

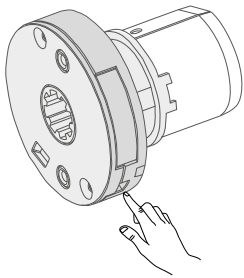
1. Switch on drive / battery
(Battery switch position see page 6 / page 10)
2. Set the drive to programming readiness by pressing the P1 key on the motor head.

The drive signals its readiness for programming by a beep and a short vibration.
After that, each keystroke must be executed within approx. 5 seconds.

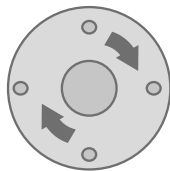
If the pauses between the individual processes are too long, the system automatically exits the programming mode.

The example below shows how to program a 1-channel handheld transmitter using the programming button on the motor head.

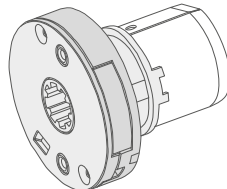
When programming a multi-channel handheld or wall transmitter (HSR-5 / HSTR-5 etc.), please select the desired channel on the handheld or wall transmitter first before you start programming.



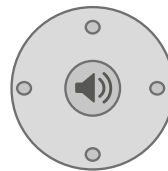
2 sec. Press key P1 on the actuator.



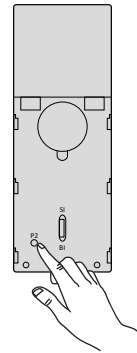
Motor vibrates briefly.



Release key.



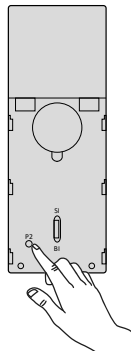
Motor piept 1 x.



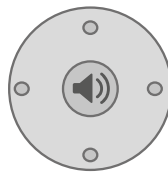
1 sec. press key P2 on the handheld transmitter.



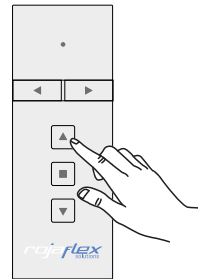
Motor vibrates briefly and beeps 1 x.



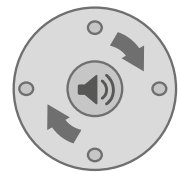
1 sec. press key P2 on the handheld transmitter.



Motor piept 1 x.



1 sec. press UP key button on the handheld transmitter.



Motor vibrates briefly and beeps 6 times.

Handheld transmitter is programmed!

Afterwards, be sure to check the direction of rotation of the drive with the UP and DOWN keys!

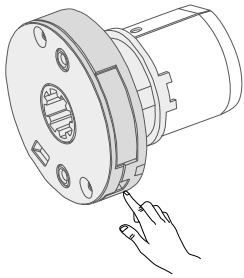
If the drive moves in the DOWN direction when the UP key is pressed, the direction of rotation of the drive must be changed (see next chapter)!

Change the direction of rotation of the drive

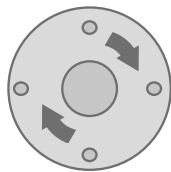
After programming the first handheld or wall transmitter into the drive receiver, check the direction of rotation of the drive by pressing the UP and DOWN keys.

To do this, start from the beginning with the chapter „Programming the handheld transmitter“ and press the DOWN key on the handheld or wall transmitter after the P2 key on the handheld or wall transmitter instead of the UP key.

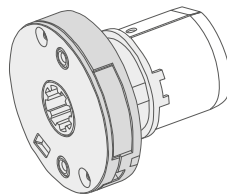
If the drive moves in the DOWN direction when the UP key is pressed, the direction of rotation of the drive must be changed.



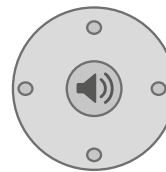
2 sec. Press key P1 on the actuator.



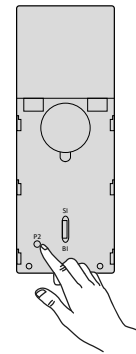
Motor vibrates briefly.



Release key.



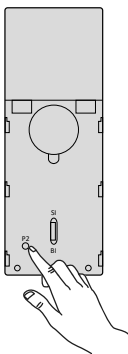
Motor piept 1 x.



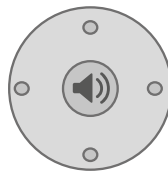
1 sec. press P2 key on the handheld or wall transmitter.



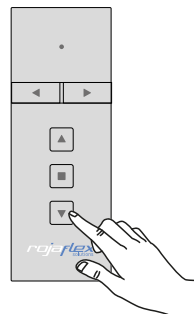
Motor vibrates briefly and beeps 1 x.



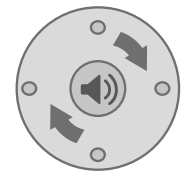
1 sec. press P2 key on the handheld or wall transmitter.



Motor piept 1 x.



1 sec. press DOWN key on the handheld or wall transmitter.



Motor vibrates briefly and beeps 6 times.

Handheld transmitter is reprogrammed!

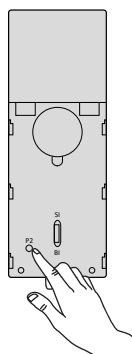
Direction of rotation is changed.

Setting the end positions (switch-off positions) of the actuator

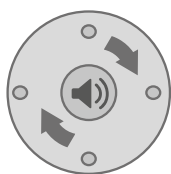
To set the end positions, a handheld or wall transmitter must be programmed into the receiver of the actuator.

Both end positions (top and bottom) must be set and the following steps must be performed in the specified sequence in each case.

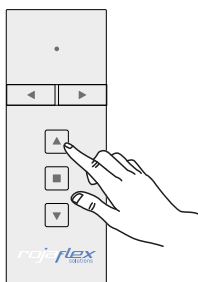
Activating the end position setting



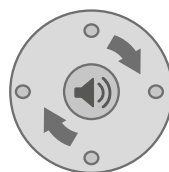
1 sec. press P2 key on the handheld or wall transmitter.



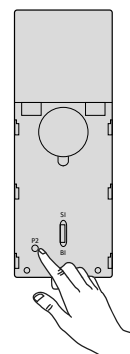
Motor vibrates briefly and beeps 1 x.



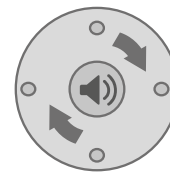
1 sec. press UP key button on the handheld or wall transmitter.



Motor vibrates briefly and beeps 1 x.



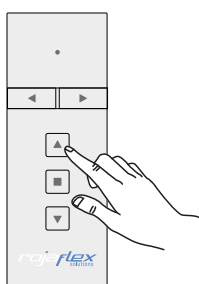
1 sec. press P2 key on the handheld or wall transmitter.



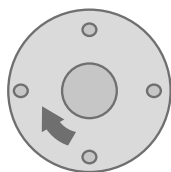
Motor vibrates briefly and beeps 4 times.

Proceed to the next step immediately.

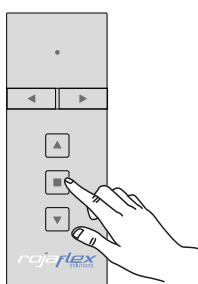
Setting the upper end position



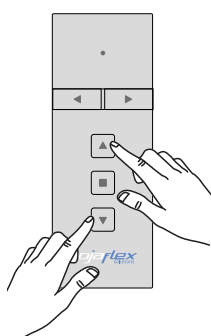
Press UP key on the hand-held or wall-mounted transmitter and move the blind (the drive) to the desired upper end position.



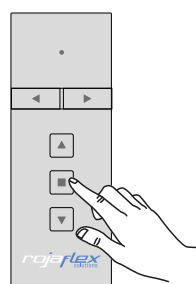
Motor moves in direction OPEN.



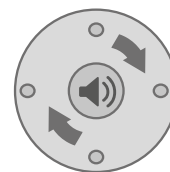
As soon as the shutter (drive) has reached the upper end position (end position), press the STOP key.



Use the UP and DOWN keys to make fine adjustments, if desired.



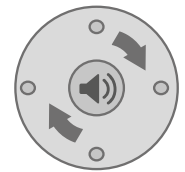
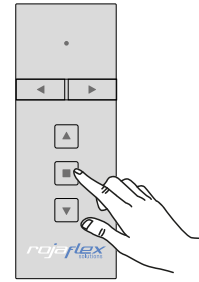
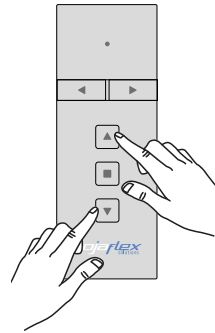
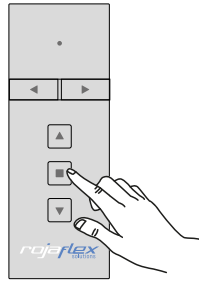
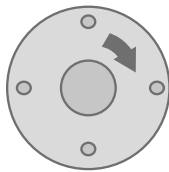
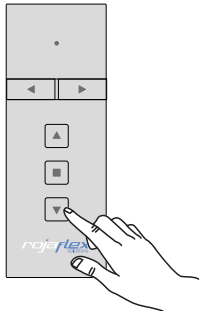
When the upper end position (end position) is reached, press the STOP key and keep it pressed.



Motor beeps 4 x, vibrates briefly and then beeps 1 x. Release key!

End position OPEN is set.

Setting the lower end position



After setting the upper end position, press the DOWN key on the handheld or wall transmitter.

Motor moves in direction AB.

As soon as the shutter (drive) has reached the lower end position (end position), press the STOP key.

Use the UP and DOWN keys to make fine adjustments, if desired.

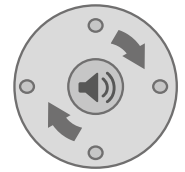
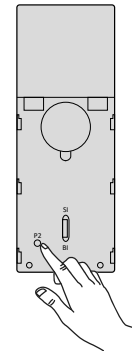
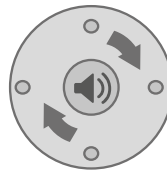
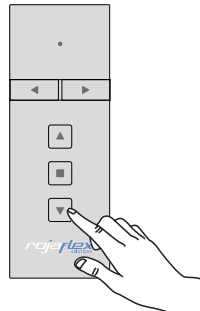
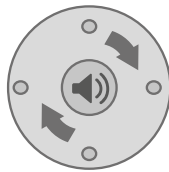
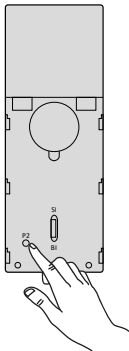
When the lower end position (end position) is reached, press the STOP key and keep it pressed.

Motor beeps 4 x, vibrates briefly and then beeps 1 x. Release key! End position DOWN is set.

Changing the end positions

If end positions (switch-off positions) have already been set and these must be changed, please proceed as follows.

Deleting the end position setting (to change the end positions)



Press the P2 key on the handheld or wall transmitter for 1 sec.

Motor vibrates briefly and beeps 1 x.

Press DOWN key on handheld or wall transmitter for 1 sec.

Motor vibrates briefly and beeps 1 x.

Press the P2 key on the handheld or wall transmitter for 1 sec.

Motor vibrates briefly and beeps 4 x.

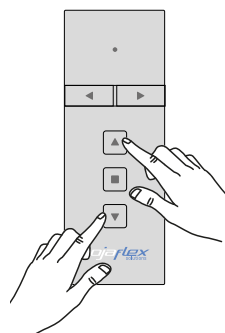
ATTENTION!

The end positions must then be readjusted!

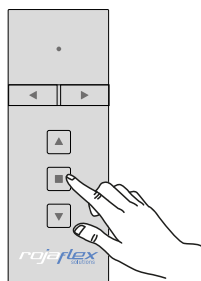
Start with the item "Activating the end position setting".

Setting the intermediate position

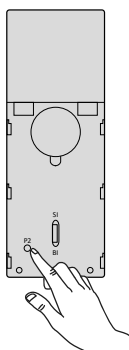
Between the end positions Top and Bottom you can store an intermediate position at any point (e.g. half open). Proceed as follows to program the intermediate position:



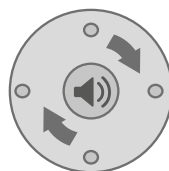
Move the blind (the drive) to the desired position using the UP or DOWN key.



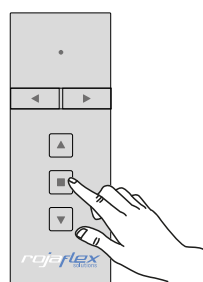
Stop the hanging (the drive) at the desired position.



Press the P2 key for approx. 1 second.



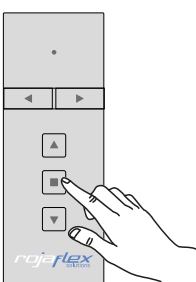
Motor vibrates briefly and beeps 1 x.



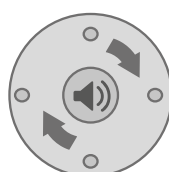
Press the Stop key for approx. 1 second.



Motor vibrates briefly and beeps 1 x.



Press the Stop key again for approx. 3 seconds.



Motor vibrates briefly and beeps 3 times. Intermediate position is saved.

Approach the intermediate position

To move the blind (drive) to the stored intermediate position, press the STOP key for at least 3 seconds.

The intermediate position can be approached from any position.

If the blind (drive) is in the intermediate position, you can use the Up or Down keys to control the respective set end position, e.g. to open or close the blind completely.

Delete the intermediate position

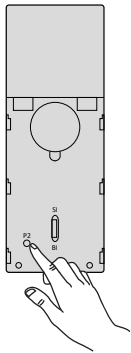
To delete the intermediate position, move to it (press the stop key for 3 sec.) and then repeat the "Setting the intermediate position" procedure.

Set jog mode

When the jog mode is activated, you can open and close your sun shading system step by step.

Each time the UP or DOWN key is pressed, the curtain (drive) moves a short distance.

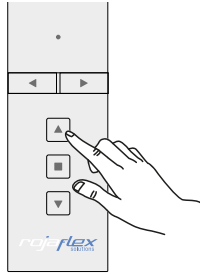
Only when you press the UP or DOWN key for longer than approx. 3 seconds, the corresponding end position is approached and the shutter opens (or closes) completely.



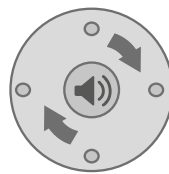
Press the P2 key on the handheld transmitter for 1 sec.



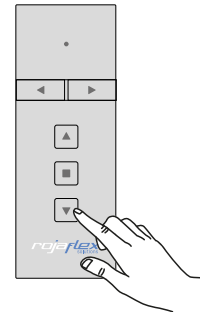
Motor vibrates briefly and beeps 1 x.



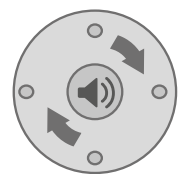
Press UP key on handheld transmitter for 1 sec.



Motor vibrates briefly and beeps 1 x.



Press the DOWN key on the handheld transmitter for 1 sec.



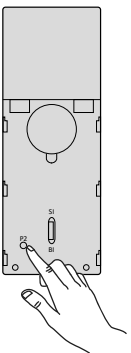
Motor vibrates briefly and beeps 2 x.

Jog mode is enabled / disabled.

To deactivate the jog mode, repeat the procedure.

Program additional handheld and wall transmitters

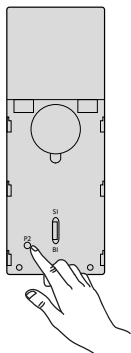
When programming a multi-channel handheld or wall transmitter (HSR-5 / HSTR-5 etc.), before you start programming, please select the desired channel on the handheld or wall transmitter first.



Press the P2 key on the handheld or wall transmitter that has already been programmed for 1 second.



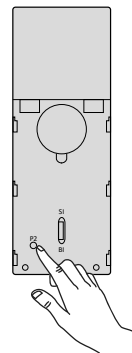
Motor vibrates briefly and beeps 1 x.



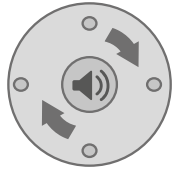
Press the P2 key again for 1 second on the handheld or wall transmitter that has already been programmed.



Motor vibrates briefly and beeps 1 x.



Press the P2 key on the NEW handheld or wall transmitter to be programmed for 1 second.



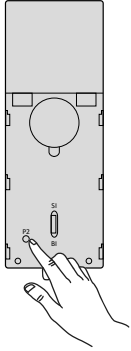
Motor vibrates briefly and beeps 7 times.

Additional handheld or wall transmitter is programmed.

Up to 20 hand-held or wall-mounted transmitters can be programmed.

Delete individual handheld and wall transmitters

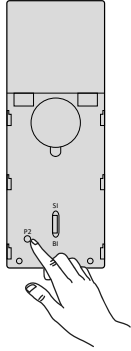
Individual handheld or wall transmitters can be deleted. A taught-in hand-held or wall transmitter must remain taught-in in the memory to delete another hand-held or wall transmitter.



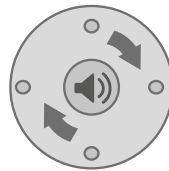
1 sec.
Press the P2 key on the remaining handheld or wall transmitter.



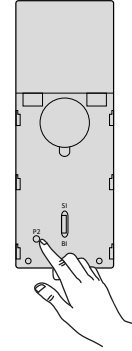
Motor vibrates briefly and beeps 1 x.



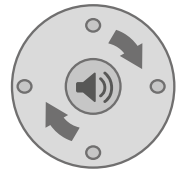
Press the P2 key on the remaining handheld or wall transmitter again for 1 sec.



Motor vibrates briefly and beeps 1 x.

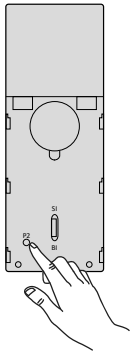


1 sec.
Press the P2 key on the handheld or wall transmitter to be deleted.



Motor vibrates briefly and beeps 5 times.
Hand-held or wall transmitter is deleted.

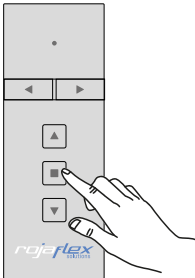
Delete ALL handheld and wall transmitters



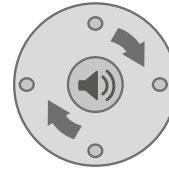
1 sec.
Press the P2 key on a taught-in handheld or wall transmitter.



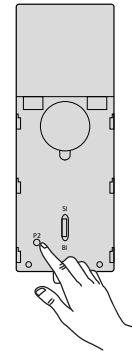
Motor vibrates briefly and beeps 1 x.



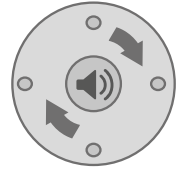
1 sec.
Press the STOP key on the handheld or wall transmitter.



Motor vibrates briefly and beeps 1 x.



Press the P2 key on the handheld or wall transmitter again for 1 sec.



Motor vibrates briefly and beeps 5x.
ALL handheld and wall transmitters are deleted.

ATTENTION!

If a new hand-held or wall transmitter is subsequently programmed, the end positions must also be reset!

1. Drive does not respond to the handheld transmitter	
Drive is switched off	Switch on the drive with the battery switch (see page 5).
Handheld transmitter not taught	Check whether the drive can be controlled with the P1 programming key on the drive head (see page 13). Teach in the handheld transmitter (see page 12 and 14).
Battery not charged or charge too low	Check whether drive can be controlled with programming key P1 on the drive head (see page 13). Charge battery (see page 12).
Receiver is switched off	Switch on receiver (see page 5).
Battery of the handheld transmitter empty or not inserted	Check the battery of the handheld transmitter and replace it if necessary. (see manual for handheld transmitter).
Setting of the handheld transmitter is incorrect	Check handheld transmitter setting (single- / bi-directional). Hand-held transmitter must be set to SI (single radio).
2. Actuator does not respond to the handheld transmitter and cannot be controlled via the P1 key on the actuator head.	
Handheld transmitter not taught	see above
Battery not charged or charge too low	Charge battery (see page 12).
3. Actuator moves in DOWN direction when UP key is pressed	
Direction of rotation of the drive incorrect	Change the direction of rotation (see page 15).
4. Drive stops during travel before reaching the end position.	
End positions incorrectly set	Set end positions (see page 16 and 17).
Max. Operating time exceeded	Operating time of the drive max. 6 minutes.
Obstacle in the travel path or hangings too heavy.	Check the curtain (roller blind).

EU Waste and recycling / Registrations

Germany for electrical devices:

Stiftung EAR
WEEE-Reg.-no.: DE 41060608

Germany for batteries:

Stiftung EAR
Batt-Reg.-no.: DE 88866710

Germany for packaging:

LUCID Reg.-no.: DE5768543732165

Austria for electrical devices:

Elektro Recycling Austria (ERA) GmbH
ERA Contract no: 40801

Austria for packaging:

Altstoff Recycling Austria (ARA) AG
ARA License number: 23363

Switzerland for electrical devices:

Stiftung SENS
Membership number: VP11544

France for electrical devices:

Ecologic
Membership number / Take-back system: M3670
National registry: UIN FR208795_01SUIN

France for packaging:

Citeo
Membership number / Take-back system: 532886
National registry: UIN FR208795_01SUIN

Spain for electrical devices:

ECOTIC
Reg.-no.: RII-AEE- 7601

Spain for packaging:

Ecoembes
Membership number: 97556

Italy for electrical devices:

Raccolta differenziata. Verifica le disposizioni del tuo Comune!

Reg.-no.: n/a

Italy for packaging:

Raccolta differenziata. Verifica le disposizioni del tuo Comune!

Membership number: n/a

Reprints, including excerpts, only with permission of the author.
Product changes that, in our view, serve to improve quality,
may be carried out at any time, even without notice or communication.
Illustrations may be sample illustrations that differ in appearance from the delivered
goods.
Errors excepted. No liability is assumed for printing errors.
Our general terms and conditions apply.

If you have any questions about this product,
please contact us at the following address:

rojaflex
is a registered trademark of
Schoenberger Germany Enterprises GmbH & Co. KG
ZechtraÙe 1-7
82069 Hohenschäftlarn
Germany

T +49 (0) 8178 / 93 29 93 93
F +49 (0) 8178 / 93 29 93 94

info@rojaflex.com
www.rojaflex.com