



Handheld transmitter

Rojaflex RHS1-W | RHS5-W

For Rojaflex radio tubular motors and radio receivers

ORIGINAL ASSEMBLY AND OPERATING INSTRUCTIONS

Eine aktuelle Vollversion der Anleitung finden Sie hier/
You can find a current full version of the manual here/
Vous trouverez ici une version complète et actuelle du mode d'emploi/
Puede encontrar una versión completa actual del manual aquí/
Potete trovare una versione completa attuale del manuale qui/
Een actuele volledige versie van de handleiding vindt u hier/
Aktualną, pełną wersję podręcznika można znaleźć tutaj/
A kézikönyv aktuális, teljes verzióját itt találja:

Original Montageanleitung **DE**

Original instructions **EN**

Mode d'emploi original **FR**

Instrucciones originales **ES**

Manuale d'uso originale **IT**

Originele gebruiksaanwijzing **NL**

Oryginalna instrukcja obsługi **PL**

Eredeti összeszerelési útmutató **HUN**





Handheld transmitter

for Rojaflex
Radio tubular motors
and radio receivers

RHS1-W
RHS5-W

Art.-Nr.:
1000017756
1000017757

CONTENTS

General safety instructions	3 - 5
Function overview /	6
Changing the battery	
Technical data / scope of delivery	7
Programming and settings	8 - 10
Notes	11
Contact information	Back

ATTENTION!

After unpacking, compare the device type with the corresponding information on the type plate. Incomplete devices or devices that do not comply with the specifications must not be put into operation and a complaint must be lodged with our customer service department (see contact information) before commissioning.



EU Declaration of Conformity according to Article 10(9):

Herewith declares Schoenberger Germany Enterprises GmbH & Co. KG, Hohenschäftlarn, that the radio system type rojaflex handheld transmitter "**RHS1-W | RHS5-W**" complies with the directive 2014/53/EU.

The full text of the EU Declaration of Conformity is available at the following Internet address:
www.rojaflex.com/konformitaetserklaerungen.html



 **WARNING!**
Important safety instructions!

- For the safety of persons it is important to follow these instructions!
- Please keep the manual and hand it over to the new owner in case of change of ownership!
- This appliance can be used by children aged from 8 years and above and persons with reduced physical, sensory or mental capabilities or lack of experience and knowledge if they have been given supervision or instruction concerning use of the appliance in a safe way and understand the hazards involved.
- Children are not allowed to play with the device.
- Cleaning and maintenance by the user must not be carried out by children without supervision.

 **WARNING!**

The motor controlled by the radio control (the transmitter) must be disconnected from its power source during cleaning, maintenance and replacement of parts!

 **WARNING!**

There is a danger to life from electric shock when working on electrical equipment!

Observe the instructions and safety instructions of the drive/receiver controlled by the radio control as well as the corresponding instructions of the driven roller shutter or sun protection system!

 **ATTENTION!**
The following instructions must be observed!

The range of radio controls is regulated by the legal requirements for radio equipment and is influenced by structural conditions, among other things.

When planning, make sure you have adequate radio reception.

This is especially true if the radio transmitter is located in a different room than the radio receiver, and therefore the radio signal must penetrate walls or ceilings.

Do not install the radio control in the direct vicinity of large metallic surfaces. Other transmitting devices (e.g. radio headphones, baby monitors, radio weather stations), whose transmission frequency is identical to that of the radio control, may interfere with reception.

 **Attention!**

It is essential to observe the instructions for correct use and the operating conditions!

In case of improper use, there is an increased risk of damage to the controlled system!

- Use the radio control (the transmitter) only for connection to roller shutter, awning and blind motors or their receivers.

- Deactivate the automatic functions of the radio control in case of snowfall, icing or danger of frost to avoid damage to the motor or the driven system.
- Only use original components and accessories from the manufacturer.
- Instruct all persons in the safe use of the radio control and the motor controlled by it.
- During commissioning, observe the moving equipment (roller shutter, awning, blind) and keep people away from it until the movement is finished.
- Prohibit children from playing with the radio control.
- Store handheld transmitters in such a way that unintentional operation, e.g. by children playing, is impossible.
- Secure the controlled system against unauthorized operation.
- Take safety precautions against unintentional switch-on.
- Carry out all cleaning work on the system in a de-energized state.
- Use caution when operating the open/extended system, as parts may fall if fasteners (e.g. springs) slacken or are broken.
- Never use defective or damaged equipment.
- Check that the motor controlled by the radio control unit and the motor power cable are intact.

 **WARNING!**

The use of defective devices can endanger persons and cause damage to property.

Regularly check the radio control and the system controlled by it for their function and keep people away from it until the test of the faultless function is finished!

Please contact our service department (see contact information page) if you notice any damage to the device.

 **ATTENTION!**

After unpacking, compare the device type with the corresponding information on the type plate.

Incomplete devices or devices that do not comply with the specifications must not be put into operation.

 **IMPORTANT!**

Disposal instructions!

(European Directive 2012/19/EU (WEEE))

Our electrical and electronic products are marked with a crossed-out wheeled garbage can, which indicates that these products and any batteries they may contain must be collected separately at the end of their useful life and must not be disposed of together with normal household waste.



The substances contained in these products may have negative effects on health and the environment, so users of electrical products and batteries also have a responsibility in recycling these waste materials and in this way contribute to the protection, preservation and improvement of the environment.

Obligation for separate disposal

Our duty as manufacturers is, among other things, to inform you of your obligation to separate disposal.

- When disposing of products with batteries, remove them from the product and dispose of them separately.
- When disposing of illuminants, they must be disposed of separately to the receptacle.

Return option and Recycling program EU

We are connected to public-law return systems throughout Europe and thus offer our customers access to a Europe-wide network of local recycling facilities (recycling centers, take-back points or similar).

Our products are professionally recycled via these local facilities. This reduces the amount of waste - to the benefit of the environment.

Our registration numbers:

	Reg. no.*
WEEE	DE 41060608
Battery	DE 88866710
Illuminant	
Transport and Shipping packaging	DE5768543732165

*For registration data of other European countries, see Contact Information page.

A take-back by us as manufacturer according to §19 WEEE is not to be asserted.

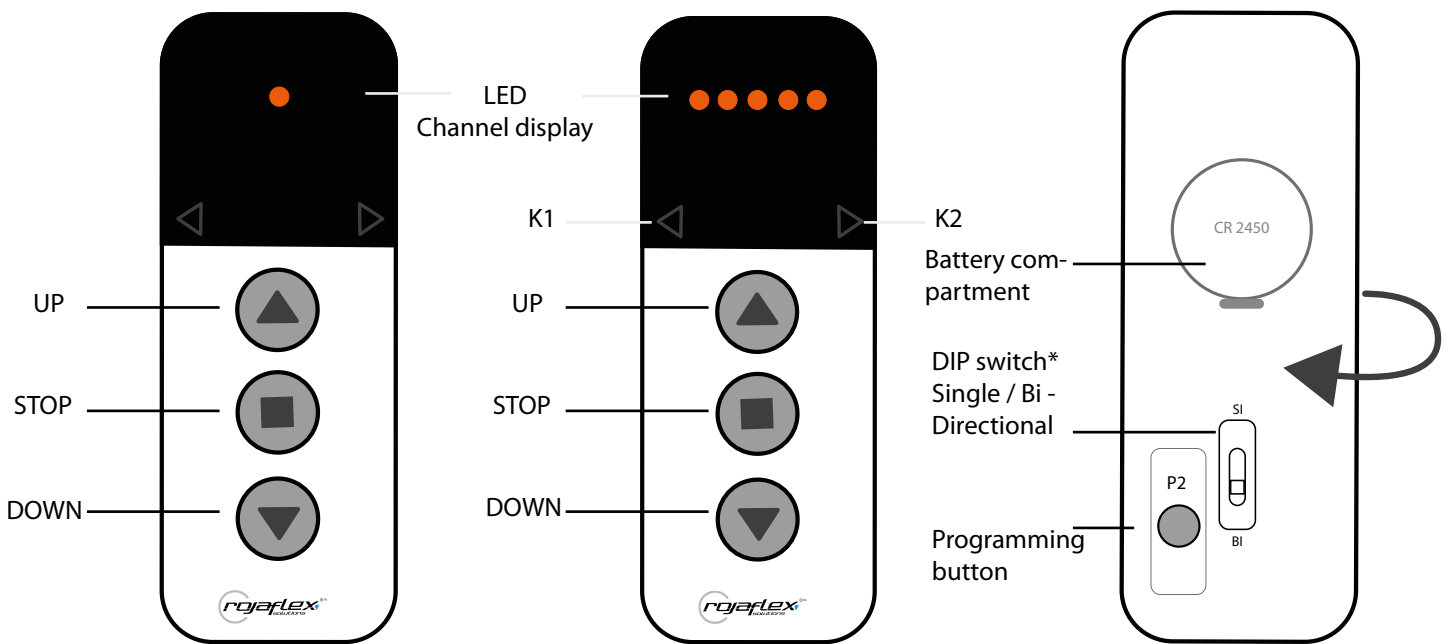
Information on the degree of fulfillment of the collection and recycling requirements

It is also our duty as a manufacturer to inform you about the degree of fulfillment of the collection and recycling requirements. Since we are connected to a qualified take-back system, we can refer to the degree of fulfillment of the recycling companies.

You can find this information on our website.

Deletion of personal data

Some of our products contain personal data. This applies in particular to information and telecommunications technology devices such as computers and smartphones. In your own interest, please note that each end user is responsible for deleting the data on the old devices to be disposed of!



1-channel handheld transmitter RHS1-W

5-channel handheld transmitter RHS5-W

Handheld transmitter - rear side with lid open



The key assignment may differ depending on the model:

K1= K- (minus)
K2= K+ (plus)

You can switch between the individual channels with the K1 and K2 keys. As soon as all 5 LEDs light up, the group control is active. You now control all programmed receivers simultaneously.

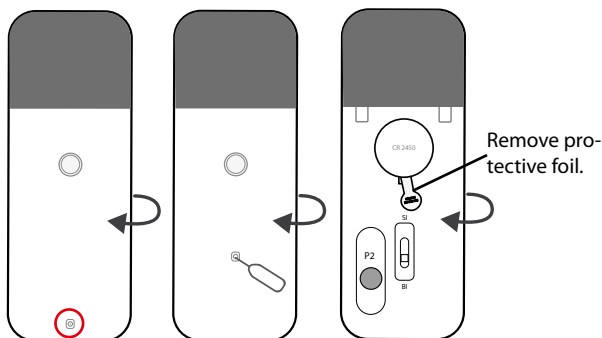
*with the "DIP"-switch you can, depending on the radio receiver (see receiver instructions), choose between "SI" (single = one-way communication) and "BI" (two-way communication) - radio.



This product contains a button cell battery. If swallowed, the button cell battery can cause severe internal burns and death in as little as 2 hours. Keep new and used batteries away from children. If the battery compartment cannot be closed securely, stop using the product and keep it away from children. If you think batteries may have been swallowed or may have entered any part of your body, seek medical attention immediately.

Inserting the battery / changing the battery

The battery is (depending on the transmitter model) enclosed loose or already installed and secured against discharge with a protective foil. Open the rear cover by pressing lightly downwards*, remove the protective film and insert the battery into the battery compartment with the + (plus) side facing upwards as shown. Then replace the rear cover.



Depending on the frequency of the switching operations, we recommend replacing the battery at least every 2 years.



Please do not dispose of batteries in household waste! Take them to an appropriate disposal station.

* depending on the model, the rear cover is additionally secured with a screw or a pushbutton. To open the screw, please use a standard Phillips screwdriver. A paper clip or a SIM tool can be used to unlock the pushbutton.

Technical data

Performance Features:	
Input voltage	3V (battery CR2450)
Transmit frequency	433,05 - 434,79 MHz
Operating current	≤ 15mA
Quiescent current	≤ 10 µA
Standby consumption	≤ 3 µW
Transmitting power	≤ 10 mW
Protection class	IP 20
Permissible ambient temperature	+10°C to +50°C
Range	Open field: approx. 150 m / indoors: approx. 30 m *
Channels	1-channel 5-channel
Compatibility	Rojaflex radio motors and radio receivers
Radio system	Rolling Code
Dimensions (approx.)	(HxBxT) 130 mm × 40 mm × 18 mm

* Range data are approximate values and depend on the structural conditions.

Scope of delivery

When unpacking, please compare the package contents with the information on the scope of delivery in these instructions!

1. Hand transmitter incl. battery
2. Wall mount incl. mounting material
3. Instruction manual



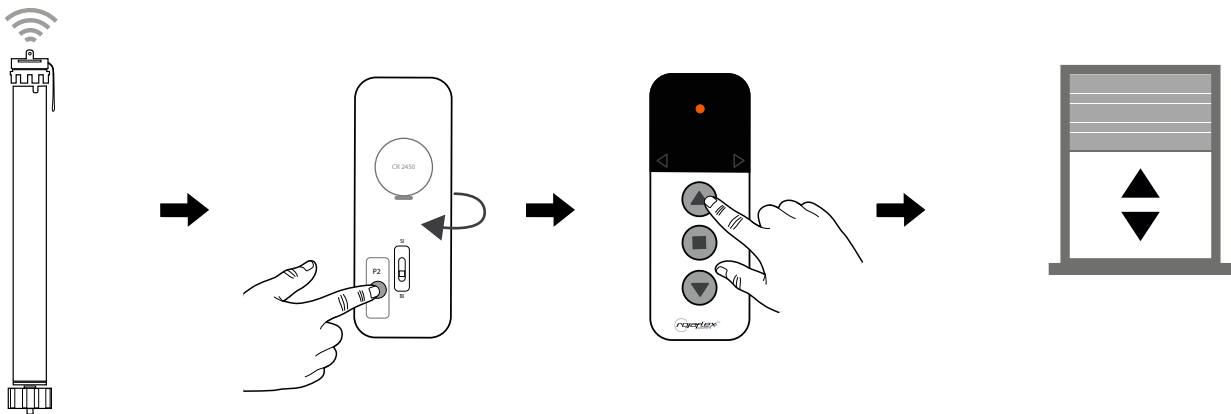
1. Programming mode - radio receiver or radio motor

Set the receiver (external Rojaflex radio receiver or Rojaflex radio motor) on which the handheld transmitter is to be programmed to programming mode (see receiver instructions).



Each keystroke must be executed within 4 seconds!
Otherwise, the system automatically exits the programming mode.

2. Programming the handheld transmitter - RHS1-W



Set receiver (motor / external receiver) to programming mode according to instructions.

Press P2 programming key (rear) 2 times.

Press UP key 1 x.

The motor (shutter) briefly moves UP/DOWN and/or the receiver beeps.
OK!
First code programming successfully carried out.



Then check the function(s) by pressing the UP / STOP / DOWN keys!

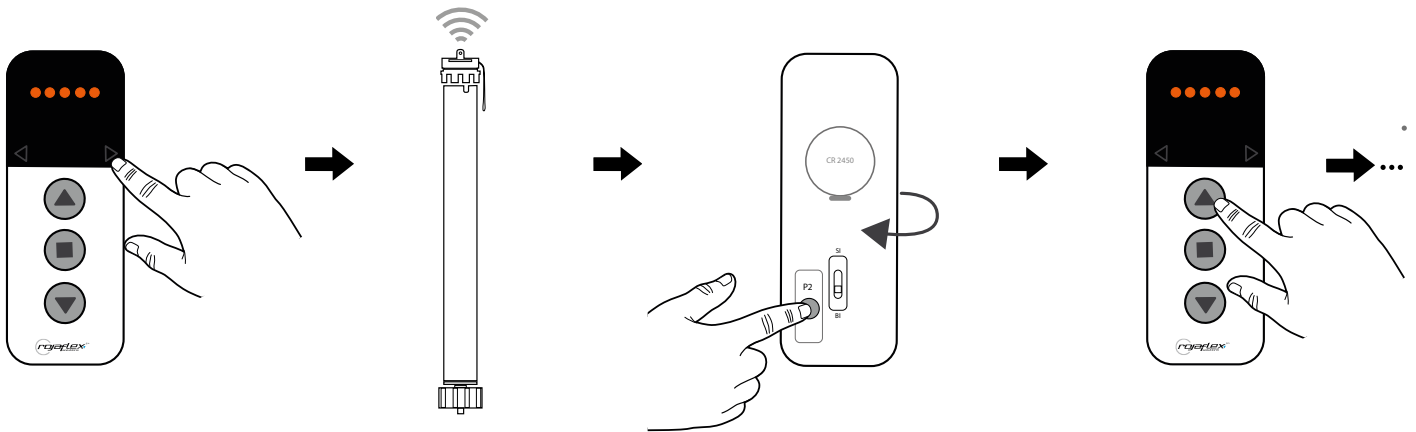
If the direction of rotation of the motor is reversed (roller shutter / motor moves downwards when the UP key is pressed), please start from the beginning and press the DOWN key after the P2 key instead of the UP key!

This changes the direction of rotation of the motor.

2.1 Programming the handheld transmitter - RHS5-W



Each keystroke must be executed within 4 seconds!
Otherwise, the system automatically exits the programming mode.

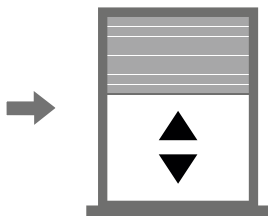


Select the desired channel by pressing the K1 (or K2) key (LED of the selected channel lights up).

Set receiver (motor / external receiver) to programming mode according to instructions.

Press P2 programming key (rear side) 2 x

Press UP key 1 x.



The motor (shutter) briefly moves UP/DOWN and/or the receiver beeps.
 OK!

First code programming successfully carried out.

To program additional channels, start from the beginning.

The group function (all LEDs light up simultaneously) can NOT be taught-in separately as a channel!

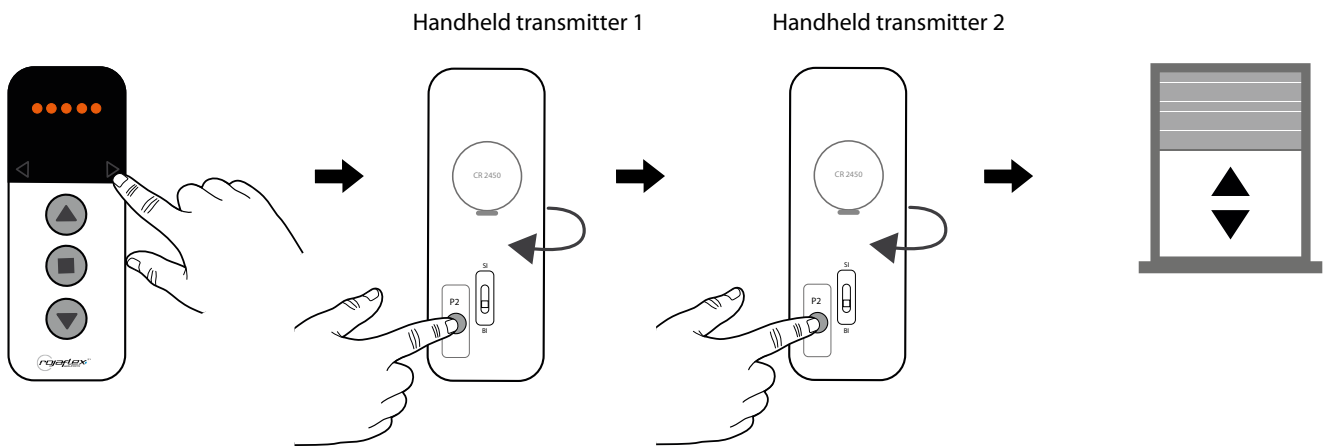


Then check the function(s) by pressing the UP / STOP / DOWN keys!

If the direction of rotation of the motor is reversed (roller shutter / motor moves downwards when the UP key is pressed), please start from the beginning and press the DOWN key after the P2 key instead of the UP key!

This changes the direction of rotation of the motor.

3. Add handheld transmitter



Ex.: RHS5-W

(not applicable for RHS1-W)

At an ALREADY programmed station, select an already programmed channel by pressing the K1 (or K2) key.

Then, on the transmitter to be programmed NEW, select the channel to be added by pressing the K2 (or K1) key (red LED of the selected channel lights up).

Press the P2 programming button (back) 3 times on the already programmed handheld transmitter.

Press the P2 programming button (back) once on the handheld transmitter to be reprogrammed.

Please note!

For multi-channel transmitters, the desired channel must be selected first!

The motor (shutter) briefly moves UP/DOWN and/or the receiver beeps.

OK!

Handheld transmitter is added.



Important:

For systems with SI (single-directional system / one-way communication) the P2 button of the already taught-in handheld transmitter is only pressed 2x!

This applies, for example, to the **MLSF/MLMF** drives and the **REHK-1** and **RUE-UP** external receivers.

Please follow the instructions of the respective receiver/motor!

For more information, please refer to the instructions of the Rojaflex radio tubular motors or radio receivers.

EU Waste and recycling / Registrations

Germany for electrical devices:

Stiftung EAR
WEEE-Reg.-no.: DE 41060608

Germany for batteries:

Stiftung EAR
Batt-Reg.-no.: DE 88866710

Germany for packaging:

LUCID Reg.-no.: DE5768543732165

Austria for electrical devices:

Elektro Recycling Austria (ERA) GmbH
ERA Contract no: 40801

Austria for packaging:

Altstoff Recycling Austria (ARA) AG
ARA License number: 23363

Switzerland for electrical devices:

Stiftung SENS
Membership number: VP11544

France for electrical devices:

Ecologic
Membership number / Take-back system: M3670
National registry: UIN FR208795_01SUIN

France for packaging:

Citeo
Membership number / Take-back system: 532886
National registry: UIN FR208795_01SUIN

Spain for electrical devices:

ECOTIC
Reg.-no.: RII-AEE- 7601

Spain for packaging:

Ecoembes
Membership number: 97556

Italy for electrical devices:

Raccolta differenziata. Verifica le disposizioni del tuo Comune!

Reg.-no.: n/a

Italy for packaging:

Raccolta differenziata. Verifica le disposizioni del tuo Comune!

Membership number: n/a

Reprints, including excerpts, only with the permission of the author.
Product changes, which from our point of view serve to improve quality, can be made at any time, even without prior notice or notification.
Illustrations can be example illustrations, which differ in appearance from the delivered goods.
Errors excepted. No liability is assumed for printing errors.
Our general terms and conditions apply.

If you have any questions about this product,
please contact us at the following address:

rojaflex
is a registered trademark of
Schoenberger Germany Enterprises GmbH & Co. KG
Zechtraße 1-7
82069 Hohenschäftlarn
Germany

T +49 (0) 8178 / 93 29 93 93
F +49 (0) 8178 / 93 29 93 94

info@rojaflex.com
www.rojaflex.com