



Vibration sensor Rojaflex RVS-01

For Rojaflex radio awning motors and radio receivers REHK-BI

ORIGINAL ASSEMBLY AND OPERATING INSTRUCTIONS

Eine aktuelle Vollversion der Anleitung finden Sie hier/
You can find a current full version of the manual here/
Vous trouverez ici une version complète et actuelle du mode d'emploi/
Puede encontrar una versión completa actual del manual aquí/
Potete trovare una versione completa attuale del manuale qui/
Een actuele volledige versie van de handleiding vindt u hier/
Aktualną, pełną wersję podręcznika można znaleźć tutaj/
A kézikönyv aktuális, teljes verzióját itt találja:

Original Montageanleitung **DE**

Original instructions **EN**

Mode d'emploi original **FR**

Instrucciones originales **ES**

Manuale d'uso originale **IT**

Originele gebruiksaanwijzing **NL**

Oryginalna instrukcja obsługi **PL**

Eredeti összeszerelési útmutató **HUN**





CONTENTS

General safety instructions	3 - 5
Function overview	6
Technical data / scope of delivery / Mounting	7
Programming and settings	8 - 10
Other settings and notes	11
Contact information	Back

ATTENTION!

After unpacking, compare the device type with the corresponding information on the type plate. Incomplete devices or devices that do not comply with the specifications must not be put into operation and a complaint must be lodged with our customer service department (see contact information) before commissioning.

EU Declaration of Conformity according to Article 10(9):

Herewith declares Schoenberger Germany Enterprises GmbH & Co. KG, Hohenschäftlarn, that the radio system type rojaflex sun-wind sensor "**RVS-01**" complies with the directive 2014/53/EU.

The full text of the EU Declaration of Conformity is available at the following Internet address:
www.rojaflex.com/konformitaetserklaerungen.html



 **WARNING!**
Important safety instructions!

- For the safety of persons it is important to follow these instructions!
- Please keep the manual and hand it over to the new owner in case of change of ownership!
- This appliance can be used by children aged from 8 years and above and persons with reduced physical, sensory or mental capabilities or lack of experience and knowledge if they have been given supervision or instruction concerning use of the appliance in a safe way and understand the hazards involved.
- Children are not allowed to play with the device.
- Cleaning and maintenance by the user must not be carried out by children without supervision.

 **WARNING!**

The motor controlled by the wireless vibration sensor must be disconnected from its power source during cleaning, maintenance and replacement of parts.

 **WARNING!**

There is a danger to life in case of non-observance!

There is a danger to life from electric shock when working on electrical equipment!

Observe the instructions and safety instructions of the drive / receiver controlled by the sensor as well as the corresponding instructions of the driven sun shading system!

 **ATTENTION!**

The following instructions must be observed!

The range of radio controls is regulated by the legal requirements for radio systems and is influenced by structural conditions, among other things. When planning, make sure you have adequate radio reception. This is especially true if the radio transmitter is located in a different room than the radio receiver, and therefore the radio signal must penetrate walls or ceilings. Do not install the radio control in the direct vicinity of large metallic surfaces. Other transmitting devices (e.g. radio headphones, baby monitors, radio weather stations), whose transmission frequency is identical to that of the radio control, may interfere with reception.

 **Attention!**

It is essential to observe the instructions for correct use and the operating conditions!

Improper use increases the risk of damage to the sun shading system!

- Use the radio control (sensor) only for connection to roller shutter, awning and blind motors.
- Mount the sensor on the outside, on the side of the awning's drop profile.
- Mount the sensor horizontally to the right.
- The sensor must be mounted in such a way that the wind speed can be measured without interference!

- Deactivate the automatic functions in case of snowfall, icing or danger of frost to avoid damage to the motor or the driven system.
- Only use original components and accessories from the manufacturer.
- Instruct all persons in the safe use of the device and the motor controlled by it.
- Watch the moving awning and keep people away from it until the movement is finished.
- Prohibit children from playing with the device.
- Store the handheld transmitter in such a way that unintentional operation, e.g. by children playing, is prevented.
- Secure the controlled system against unauthorized operation.
- Take safety precautions against unintentional switch-on.
- Carry out all cleaning work on the sun shading system in a de-energized state.
- Use caution when operating the open/extended system, as parts may fall if fasteners (e.g. springs) weaken or break.
- Never use defective or damaged equipment.
- Check the motor controlled by the sensor and the power cable of the motor for integrity.



WARNING!

The use of defective devices can endanger persons and cause damage to property.

Check the sensor regularly for proper function!

Please contact our service department (see last page) if you notice any damage to the device.



ATTENTION!

After unpacking, compare the device type with the corresponding information on the type plate.

Incomplete devices or devices that do not comply with the specifications must not be put into operation.



IMPORTANT!

Disposal instructions!

(European Directive 2012/19/EU (WEEE))

Our electrical and electronic products are marked with a crossed-out wheeled garbage can, which indicates that these products and any batteries they may contain must be collected separately at the end of their useful life and must not be disposed of together with normal household waste.



The substances contained in these products may have negative effects on health and the environment, so users of electrical products and batteries also have a responsibility in recycling these waste materials and in this way contribute to the protection, preservation and improvement of the environment.

Obligation for separate disposal

Our duty as manufacturers is, among other things, to inform you of your obligation to separate disposal.

- When disposing of products with batteries, remove them from the product and dispose of them separately.
- When disposing of illuminants, they must be disposed of separately to the receptacle.

Return option and Recycling program EU

We are connected to public-law return systems throughout Europe and thus offer our customers access to a Europe-wide network of local recycling facilities (recycling centers, take-back points or similar).

Our products are professionally recycled via these local facilities. This reduces the amount of waste - to the benefit of the environment.

Our registration numbers:

	Reg. No.*
WEEE	DE 41060608
Battery	DE 88866710
Illuminant	
Transport and Shipping packaging	DE5768543732165

***For registration data of other European countries, see Contact Information page.**

A take-back by us as manufacturer according to §19 WEEE is not to be asserted.

Information on the degree of fulfillment of the collection and recycling requirements

As a manufacturer, it is also our duty to inform you about the degree of fulfillment of the collection and recycling requirements. Since we are connected to a qualified take-back system, we can refer to the degree of fulfillment of the recycling companies.

You can find this information on our website.

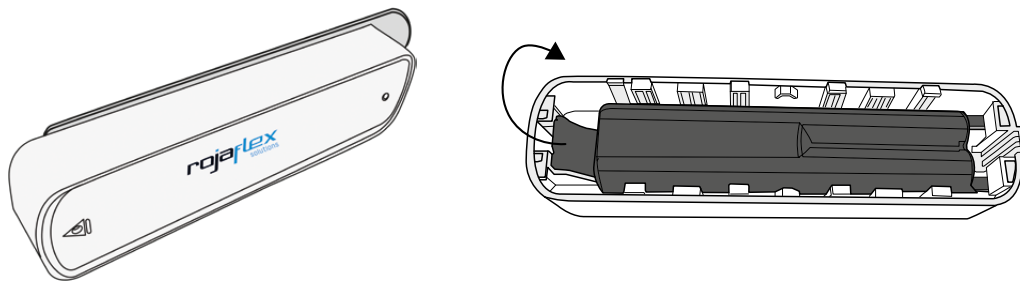
Deletion of personal data

Some of our products contain personal data. This applies in particular to information and telecommunications technology devices such as computers and smartphones. In your own interest, please note that each end user is responsible for deleting the data on the old devices to be disposed of!

The **RVS-01** is a battery-powered vibration sensor for motorized awnings. Incoming wind generates vibrations at the drop profile of the awning.

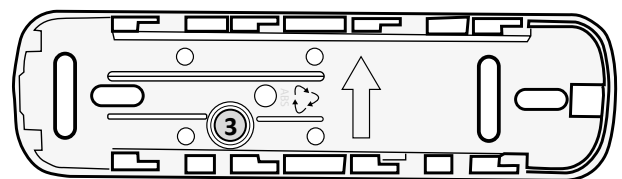
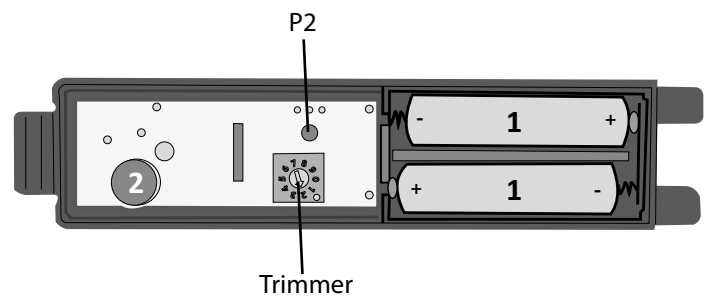
The sensor can be set to 9 sensitivity levels and sends a retract command to the previously taught-in receiver when the preset sensitivity level is reached (see technical data for compatible receivers).

1. Slide on the rear cover from the side.
2. Remove the control unit from the housing.



Functional Description:

- | | | |
|---------|---|------------------------------------|
| P2 key | = | Programming |
| Trimmer | = | Set sensitivity |
| | | 0 = Programming mode |
| | | 1 = high sensitivity |
| | | 9 = low sensitivity* |
| 1 | = | Batteries (2 x AAA) |
| | | Pay attention to correct polarity! |
| 2 | = | Beeper |



ATTENTION!

The magnet must be in the specified position when the sensor is assembled!
The sensor beeps when the housing is closed to signal activation.

- | | | |
|---|---|------------------------|
| 3 | = | Magnet for Readkontakt |
|---|---|------------------------|



*** for folding arm awnings we recommend a setting of max. level 3.**
Please observe the instructions for the awning observe!

NOTICE:

If the battery voltage drops below 2.2 V, the sensor beeps at intervals of approx. 5 seconds.



Risk of fire or explosion if the battery is replaced by an incorrect type!

Technical data

Input voltage	3 V DC (batteries 2 x AAA)	
Transmit frequency	433.05 - 434.79 MHz	
Operating current	≤ 20 mA	
Quiescent current	≤ 30 µA	
Standby consumption	≤ 0.1 mW	
Transmitting power	≤ 10 mW	
Protection class	IP 44	
Permissible temperature range	- 20 °C to + 50 °C	
Adjustment range wind speed	9 levels (level 0 = programming mode)	It is essential to observe the permissible wind class for the sun shading system!
Range	approx. 30 m*	
Channels	1-channel	
Compatibility	Rojaflex radio awning motors (type ELFIM-45M) and receiver REHK-BI	
Dimensions	150mm x 41mm x 26mm	

Art. No. 1000018670

* Range data are approximate values and depend on the structural conditions. The sensor must be mounted on the drop profile of the awning.

Scope of delivery

After unpacking, please compare the package contents with the information on the scope of delivery in these instructions.

1. Vibration sensor RVS-01
2. Instruction manual

1.

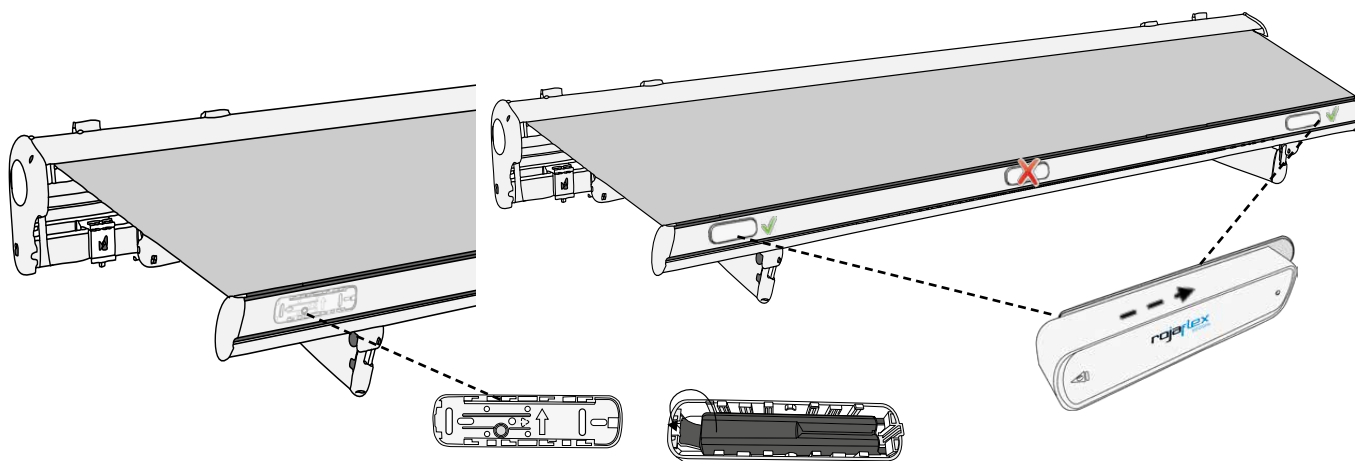


2.



Mounting

1. Attach the rear cover (base) to the outside (left or right) of the front of the drop-out profile. Arrow must point upwards.
2. Click the control unit into the housing.
3. Slide the housing onto the base.

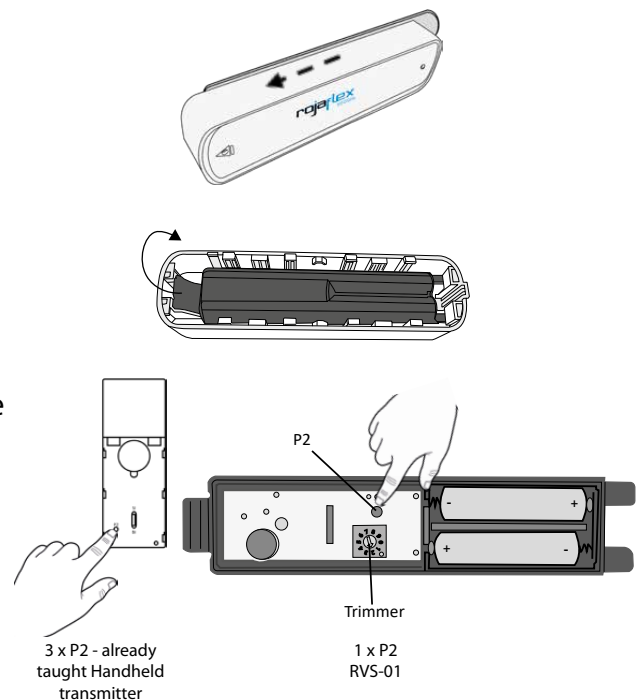


To be able to program the sensor, a hand-held or wall transmitter must already be programmed in the corresponding receiver (Rojaflex radio motor or radio receiver).

Each keystroke must be executed within approx. 4 seconds!
Otherwise, the system automatically exits the programming mode.

1. Programming the RVS-01 vibration sensor

- 1.1 Open the housing and remove the control unit.
- 1.2 Set the trimmer to level "0" using a small screwdriver.
- 1.3 Press key P2 3 times in succession on an already programmed handheld transmitter.
- 1.4 Press the P2 key on the RVS-01 once. Motor moves up/down briefly. RVS-01 is programmed.
- 1.5 Set the desired sensitivity of the sensor on the trimmer.
-start with a low setting (level 1 or 2).
- 1.5 Click the control unit into the housing.
- 1.5 Slide the housing back onto the rear cover. slide
Sensor beeps briefly and is activated.



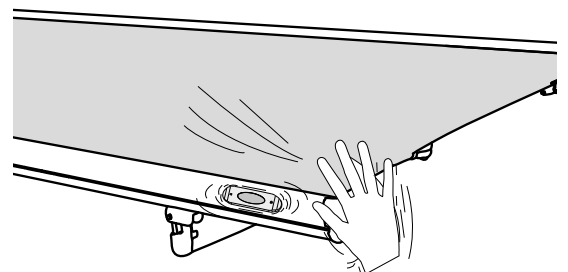
2. Check the function

- 2.1 The awning's drop profile vibrates oscillate.



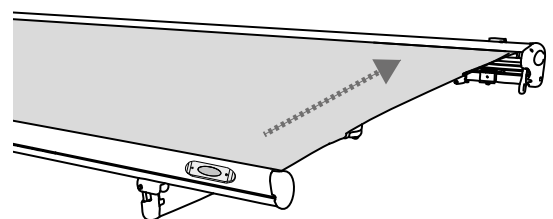
CAUTION! Do not move the awning too much!

- 2.2 After approx. 2-3 seconds, the awning must retract automatically.
- 2.3 Change the trimmer setting if necessary.



NOTE!

After the retract command has been triggered by the sensor, the awning cannot be extended for approx. 10 minutes (blocking time).

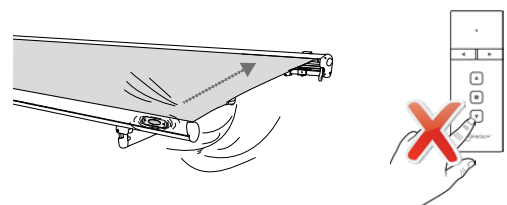


3. Deactivate the sensor

ATTENTION!

Not recommended, as there is a risk of damage to the sunshade system when the sensor is deactivated.

- 3.1 Set the trimmer to level "0".



When the set vibration intensity is reached, the retract command is triggered with a delay of approx. 3 seconds and repeated 2 times.

EU Waste and recycling / Registrations

Germany for electrical devices:

Stiftung EAR
WEEE-Reg.-no.: DE 41060608

Germany for batteries:

Stiftung EAR
Batt-Reg.-no.: DE 88866710

Germany for packaging:

LUCID Reg.-no.: DE5768543732165

Austria for electrical devices:

Elektro Recycling Austria (ERA) GmbH
ERA Contract no: 40801

Austria for packaging:

Altstoff Recycling Austria (ARA) AG
ARA License number: 23363

Switzerland for electrical devices:

Stiftung SENS
Membership number: VP11544

France for electrical devices:

Ecologic
Membership number / Take-back system: M3670
National registry: UIN FR208795_01SUIN

France for packaging:

Citeo
Membership number / Take-back system: 532886
National registry: UIN FR208795_01SUIN

Spain for electrical devices:

ECOTIC
Reg.-no.: RII-AEE- 7601

Spain for packaging:

Ecoembes
Membership number: 97556

Italy for electrical devices:

Raccolta differenziata. Verifica le disposizioni del tuo Comune!

Reg.-no.: n/a

Italy for packaging:

Raccolta differenziata. Verifica le disposizioni del tuo Comune!

Membership number: n/a

Reprints, including excerpts, only with the permission of the author.
Product changes, which from our point of view serve to improve quality, can be made at any time, even without prior notice or notification.
Illustrations can be example illustrations, which differ in appearance from the delivered goods.

Errors excepted. No liability is assumed for printing errors.
Our general terms and conditions apply.

If you have any questions about this product,
please contact us at the following address:

rojaflex
is a registered trademark of
Schoenberger Germany Enterprises GmbH & Co. KG
ZechtraÙe 1-7
82069 Hohenschäftlarn
Germany

T +49 (0) 8178 / 93 29 93 93
F +49 (0) 8178 / 93 29 93 94

info@rojaflex.com
www.rojaflex.com